

# PA-10 (Manual)

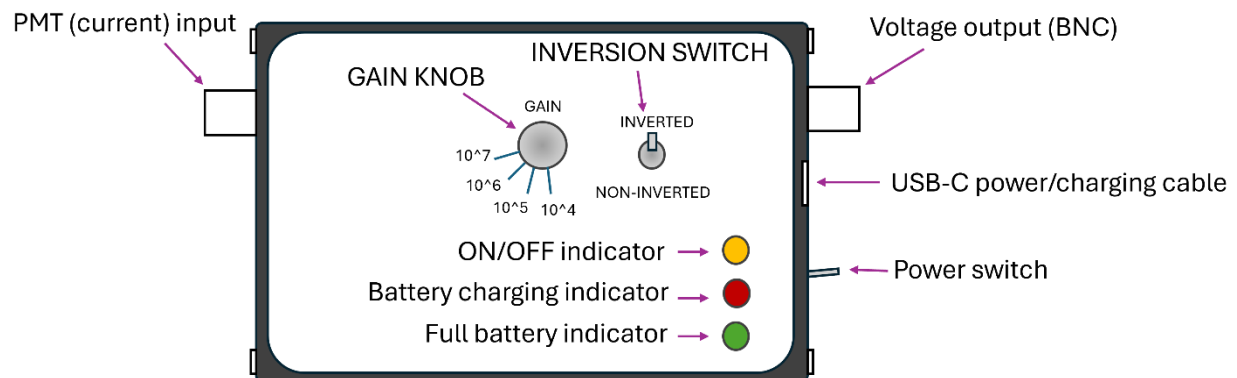


**Important:** This device contains an internal Li-ion battery!

<b>Numbers of gain steps</b>	<b>4</b>
Gain and bandwidth	Level 1: $10^4$ , 20 MHz Level 2: $10^5$ , 10 MHz Level 3: $10^6$ , 1.5 MHz Level 4: $10^7$ , 150 kHz
Charger/power	USB-C (5 V, 0.5 A)
Battery capacity	6600 mAh
Battery life	>24 hours on battery only
Product dimensions:	5' x 4' x 2'

The PA-10 is designed for use with Hamamatsu (or similar) current-output photomultiplier tubes (PMTs) such as H16722 series (replacement for H7422) and H16204 series. A USB-A to USB-C power cable is included. Signal input and output are using BNC connections. 50  $\Omega$  output impedance. Maximum Output:  $\pm 5$  V (into 50  $\Omega$  load)

Operating temperature range: 32-113 °F recommended.



## Power & Charging

- The device operates with 5 V USB power source.
- Connecting USB power will charge the internal battery.
- The amplifier can operate without external power if the battery is not empty.

## LED Charging Indicators

- When the power is plugged in, red LED is on, it means battery is charging. The amplifier can be used during charging.

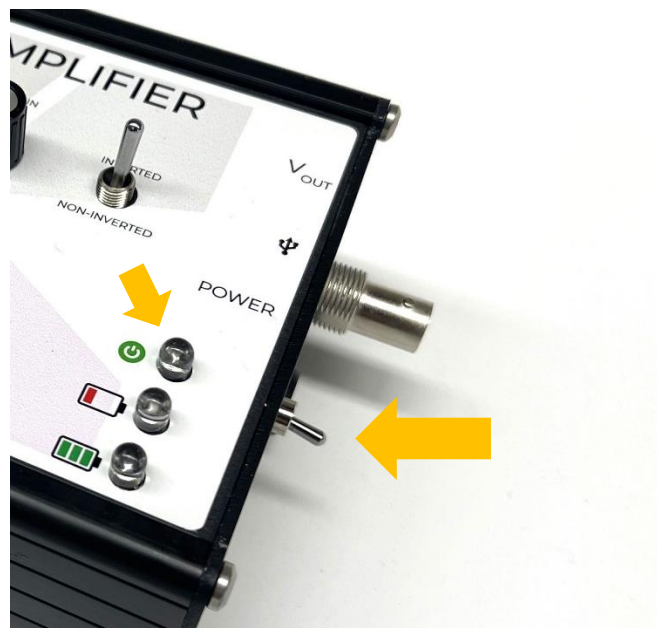


- When the power is plugged in, green LED is on, it means battery is fully charged



#### Turn on the device:

- Use the side power switch to control the device.
- **Switch up** → Device ON
- When powered on, the yellow LED indicator will illuminate.





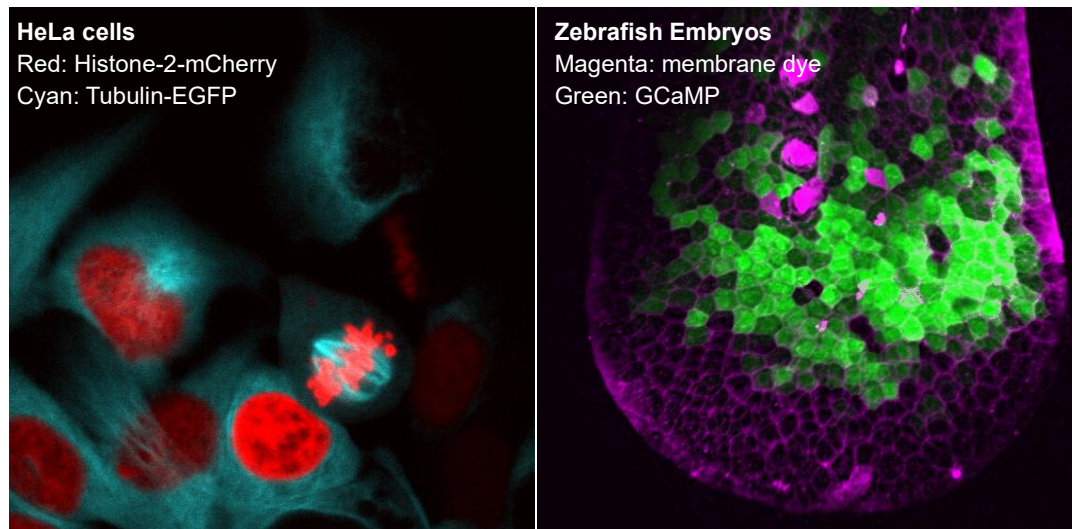
### Gain and output inversion

- Gain is selectable from  $10^4$  to  $10^7$  using the gain adjustment knob (4 discrete levels).
- The Inversion Switch selects: Normal (non-inverted) output and Inverted output (typically selected).

### Return & Refund Policy

- Unopened and unused products may be returned for a full refund.  
No restocking fee will apply.  
The customer is responsible for return shipping and insurance.
- Opened or used products may be returned within 90 days, subject to inspection.  
A 10-15% restocking fee may apply, depending on product condition.  
The customer is responsible for return shipping and insurance.
- All returns require a Return Merchandise Authorization (RMA) before shipment.
- Products must be returned with all accessories.
- Custom, modified, or special-order items are non-returnable.

Example images (used with Hamamatsu H7422-40)



Warranty: 1-Year Limited Warranty

Additional Information

Website: [www.photokinesis.tech](http://www.photokinesis.tech)

Email: [info@photokinesis.tech](mailto:info@photokinesis.tech)